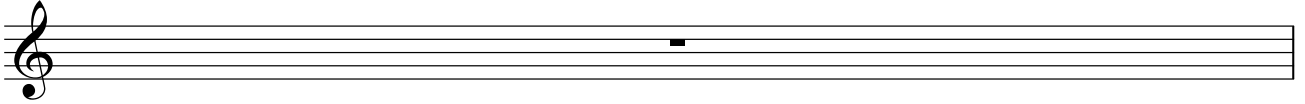


Lesson 1

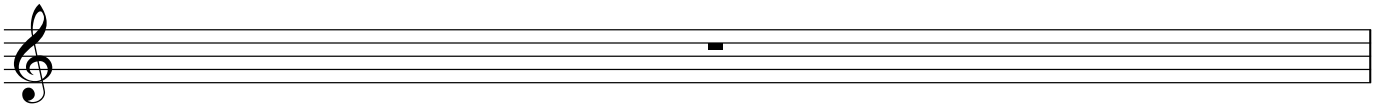
Middle C

Hello and welcome to the beginner piano lessons at FèisTV!

This is the staff. We use it to read music and we place the musical notes onto it.



This is the 'treble clef'. The treble clef tells us that we are using the notes from middle C up to the top of the piano. Have a go at drawing some treble clefs on the staff below.



This is note middle C. It is below the staff and has a line through it. Have a go at drawing some middle C's on the staff below

